

Detail of Exposed Span. Upstream View

Approx. 42'

Top of Pipe Weight Elevation = 1274.3'

Bottom of Scour Elevation = 1268.8'

Flow Direction

Detail of Exposed Span.

Flow Direction

34"

Flow Direction
~ 0.5 ft/s

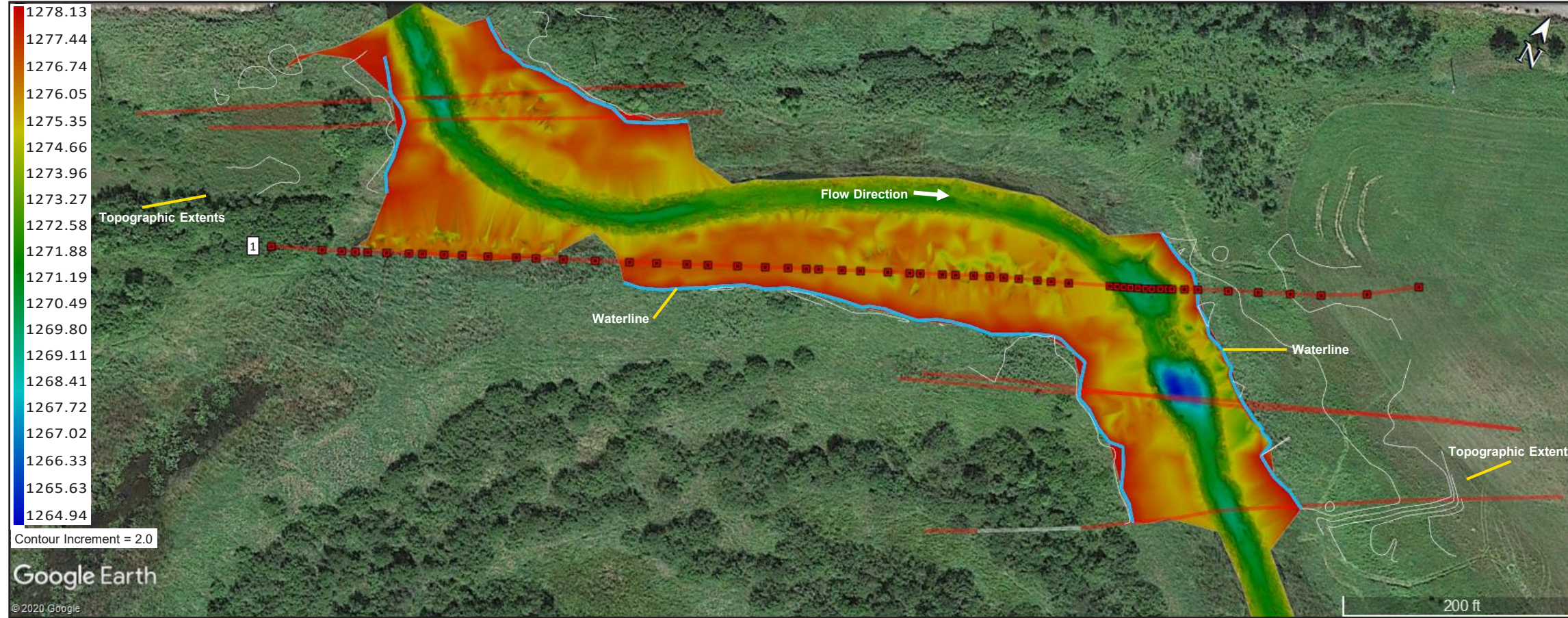
DOC
MAPPING

DEPTH OF COVER STUDY
DATE(S): 9/22/20 - 9/24/20

Multi-Beam Sonar Imagery

PREPARED FOR:

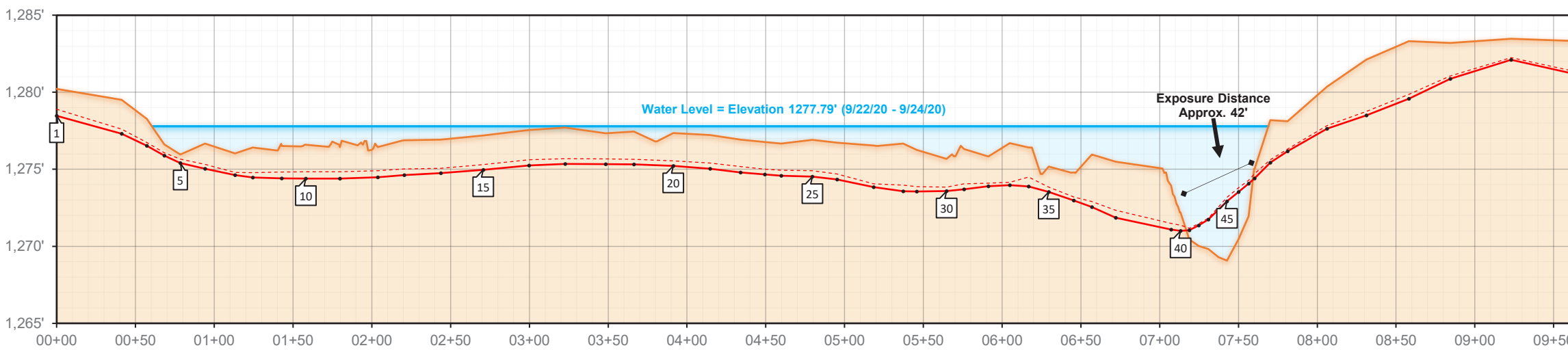
PLAN VIEW



DoC DATA

Pt. ID	STA#	Easting (ft)	Northing (ft)	Topo Elev. (ft)	T.O.P. Elev. (ft)	DoC (ft)	MS DoC* (ft)
1	00+00			1280.22	1278.48	1.74	1.33
2	00+41			1279.51	1277.31	2.20	1.91
3	00+57			1278.27	1276.53	1.74	1.53
4	00+68			1276.61	1275.88	0.73	0.54
5	00+79			1275.96	1275.41	0.55	0.29
6	00+94			1276.67	1275.04	1.64	1.36
7	01+13			1276.03	1274.62	1.41	1.24
8	01+24			1276.42	1274.47	1.94	1.64
9	01+43			1276.51	1274.41	2.10	1.69
10	01+58			1274.84	1274.39	0.45	0.00
11	01+80			1276.44	1274.39	2.04	1.60
12	02+04			1276.44	1274.48	1.96	1.53
13	02+21			1276.89	1274.62	2.27	1.86
14	02+44			1276.92	1274.75	2.17	1.85
15	02+71			1277.19	1274.97	2.22	1.88
16	03+00			1277.55	1275.25	2.30	1.93
17	03+23			1277.71	1275.35	2.36	2.02
18	03+48			1277.34	1275.33	2.00	1.67
19	03+66			1277.45	1275.31	2.14	1.81
20	03+91			1277.36	1275.22	2.13	1.81
21	04+15			1277.22	1275.03	2.19	1.82
22	04+34			1276.92	1274.80	2.12	1.74
23	04+49			1276.76	1274.66	2.10	1.76
24	04+60			1276.66	1274.59	2.08	1.73
25	04+80			1276.90	1274.52	2.38	1.99
26	04+95			1276.73	1274.34	2.39	2.03
27	05+18			1276.55	1273.85	2.70	2.49
28	05+37			1276.67	1273.57	3.11	2.70
29	05+46			1276.26	1273.55	2.71	2.39
30	05+65			1275.67	1273.59	2.09	1.84
31	05+76			1276.31	1273.71	2.61	2.25
32	05+91			1275.83	1273.90	1.94	1.74
33	06+05			1276.70	1273.97	2.73	2.54
34	06+17			1276.41	1273.89	2.52	1.92
35	06+30			1275.17	1273.53	1.64	1.34
36	06+45			1274.80	1272.98	1.82	1.60
37	06+57			1275.96	1272.56	3.40	3.05
38	06+72			1275.49	1271.85	3.64	3.16
39	07+07			1273.94	1271.08	2.86	2.45
40	07+13			1272.20	1271.00	1.20	0.84
41	07+19			1270.45	1271.04	-0.60	-0.72
42	07+25			1270.03	1271.36	-1.33	-1.45
43	07+31			1269.82	1271.74	-1.92	-2.01
44	07+37			1269.30	1272.38	-3.08	-3.25
45	07+43			1269.07	1272.92	-3.85	-4.11

PROFILE VIEW



LEGEND

- Water Level
- Topo / Bathymetry
- Projected Topo / Bathymetry
- +VSDV
- T.O.P. Point
- No Data (obstruction, loss of signal)
- Overlaid Data (if applicable)

DEFINITIONS

DoC - Depth of Cover

T.O.P. - Top of Pipe (or Cable, Conduit, etc.)

+VSDV - Positive aspect of vertical confidence level. Represents a 95% likelihood that the true position of the target lies deeper than this point.

MSDoC* - Minimum Statistical Depth of Cover. This reflects the measured distance from the +VSDV component to the Topo / Bathymetry line.

GEODETIC SETTINGS

PLOT NOTES

CONTROL POINT VERIFICATION

CONTROL POINTS WERE ESTABLISHED AND/OR REFERENCED BY DoC MAPPING TO ADJUST FOR HORIZONTAL AND VERTICAL VARIANCE DURING THE TIME OF THIS SURVEY. INFORMATION FOR THE CONTROL POINTS BELOW:

PLEASE REFER TO THE "CONTROL POINT VERIFICATION SHEET" FOR MORE DETAILS ON THE CONTROL POINT(S) AND DoC MAPPING'S OBSERVATIONS.

Land Data
Underwater Data
Italics = Projected topo or bathymetric points and DoC / MSDoC

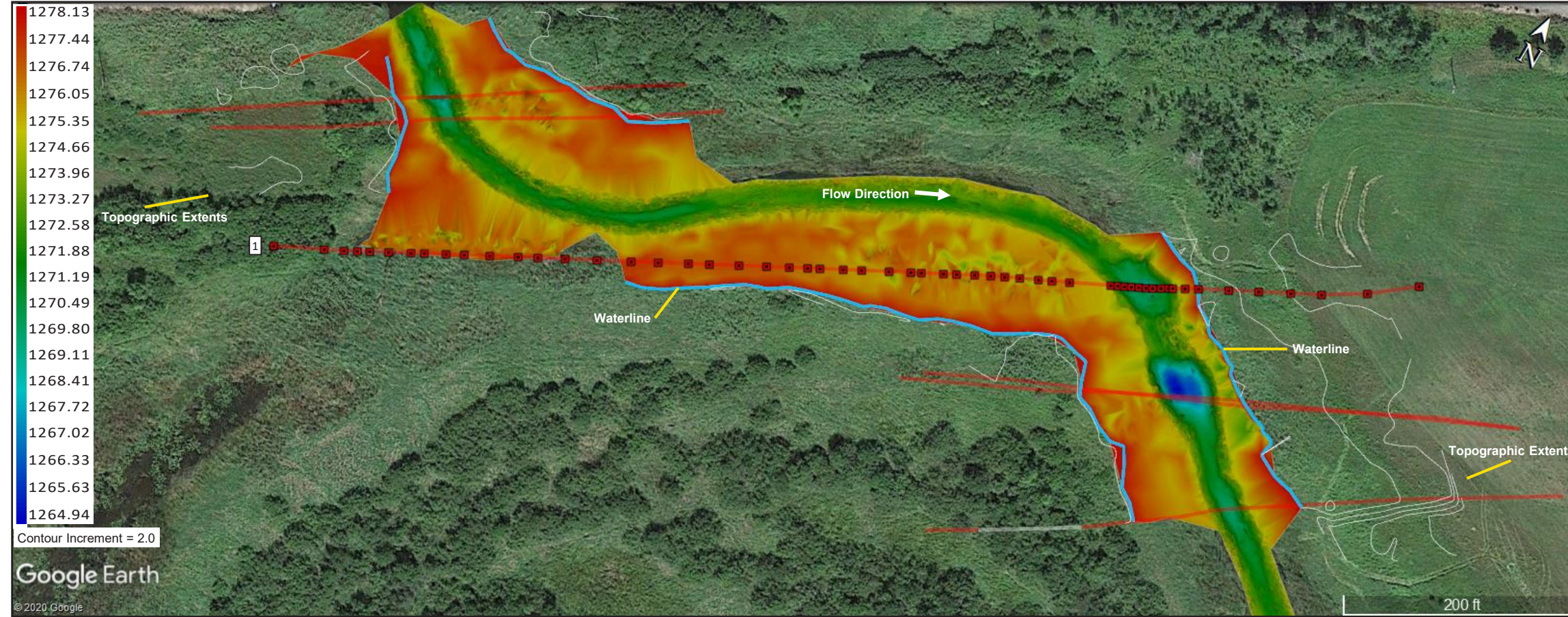
DOC MAPPING

DEPTH OF COVER STUDY
DATE(S): 9/22/20 - 9/24/20

PLAN / PROFILE (Page 1)

PREPARED FOR:

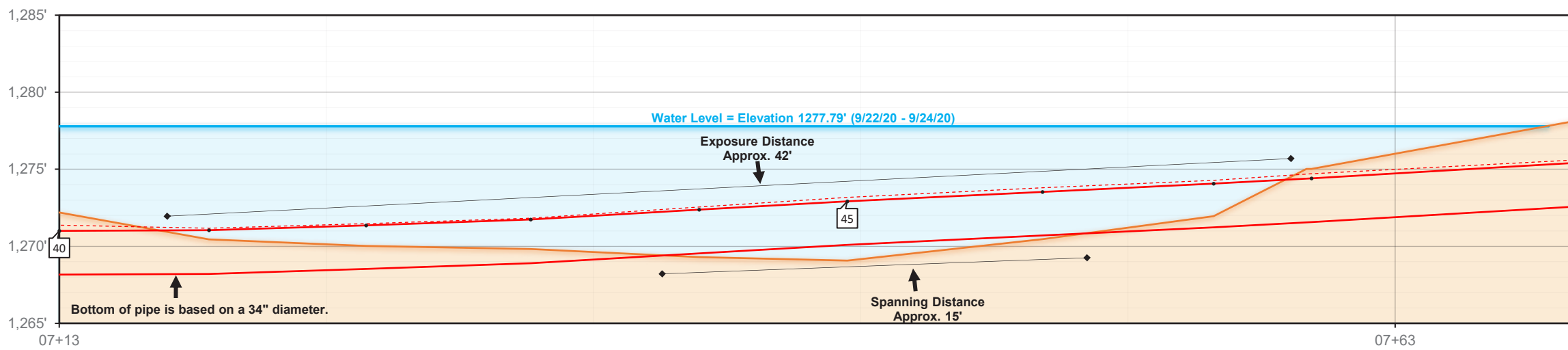
PLAN VIEW



DoC DATA


Pt. ID	STA#	Easting (ft)	Northing (ft)	Topo Elev. (ft)	T.O.P. Elev. (ft)	DoC (ft)	MS DoC* (ft)
40	07+13			1272.20	1271.00	1.20	0.84
41	07+19			1270.45	1271.04	-0.60	-0.72
42	07+25			1270.03	1271.36	-1.33	-1.45
43	07+31			1269.82	1271.74	-1.92	-2.01
44	07+37			1269.30	1272.38	-3.08	-3.25
45	07+43			1269.07	1272.92	-3.85	-4.11
46	07+50			1270.46	1273.54	-3.07	-3.33
47	07+56			1271.95	1274.07	-2.12	-2.34
48	07+60			1275.02	1274.41	0.62	0.32
49	07+70			1278.19	1275.43	2.76	2.57

PROFILE VIEW



Land Data
Underwater Data
Italics = Projected topo or bathymetric points and DoC / MSDoC

LEGEND	DEFINITIONS	GEODETIC SETTINGS	PLOT NOTES	CONTROL POINT VERIFICATION
<ul style="list-style-type: none"> Water Level Topo / Bathymetry Projected Topo / Bathymetry +VSDV T.O.P. Point No Data (obstruction, loss of signal) Overlaid Data (if applicable) 	<p>DoC - Depth of Cover</p> <p>T.O.P. - Top of Pipe (or Cable, Conduit, etc.)</p> <p>+VSDV - Positive aspect of vertical confidence level. Represents a 95% likelihood that the true position of the target lies deeper than this point.</p> <p>MSDoC* - Minimum Statistical Depth of Cover. This reflects the measured distance from the +VSDV component to the Topo / Bathymetry line.</p>			<p>CONTROL POINTS WERE ESTABLISHED AND/OR REFERENCED BY DoC MAPPING TO ADJUST FOR HORIZONTAL AND VERTICAL VARIANCE DURING THE TIME OF THIS SURVEY. INFORMATION FOR THE CONTROL POINTS BELOW:</p> <p>PLEASE REFER TO THE "CONTROL POINT VERIFICATION SHEET" FOR MORE DETAILS ON THE CONTROL POINT(S) AND DoC MAPPING'S OBSERVATIONS.</p>



DEPTH OF COVER STUDY
DATE(S): 9/22/20 - 9/24/20

PROFILE DETAIL (Point #40 to Point #49)

PREPARED FOR: