

Contour Increment = 2.0

**DOC**  
MAPPING

DEPTH OF COVER STUDY  
DATE(S): 12/14/20 - 12/16/20

**Bathymetric/Topographic Overview**

PREPARED FOR:

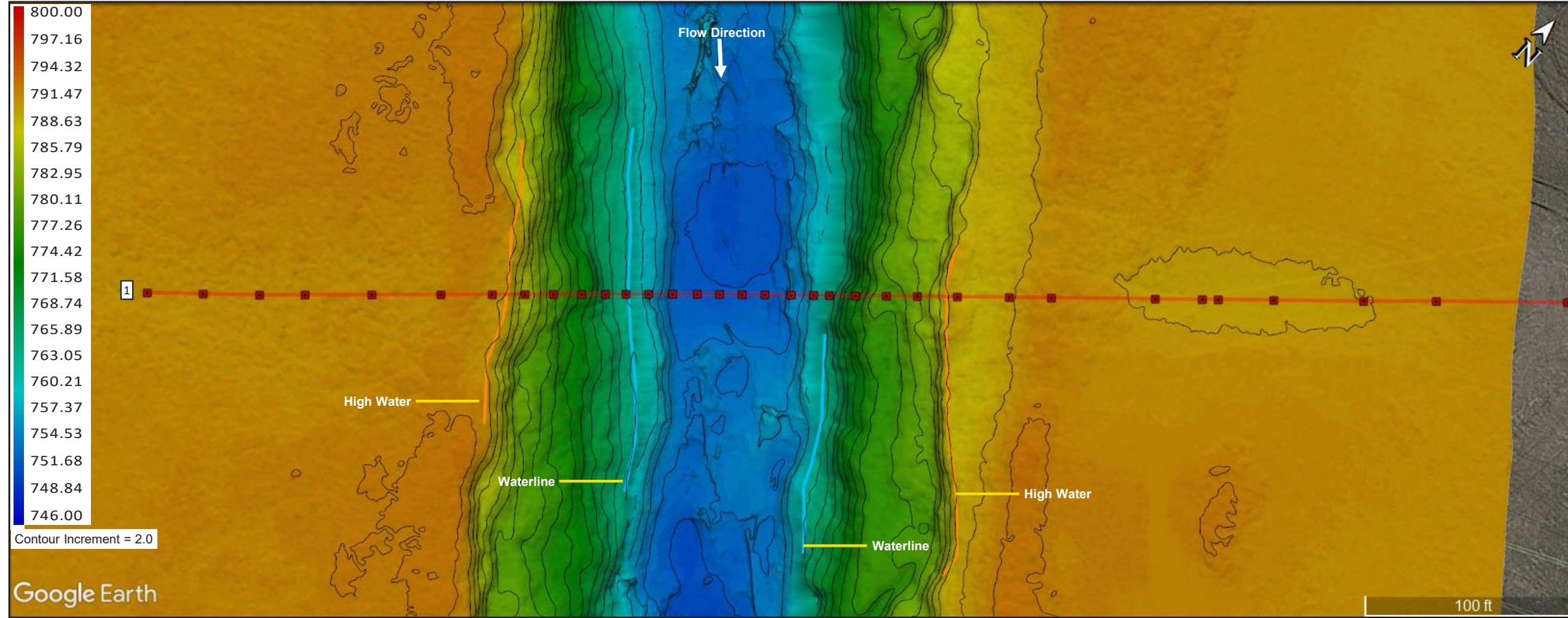
Google Earth

© 2020 Google



500 ft

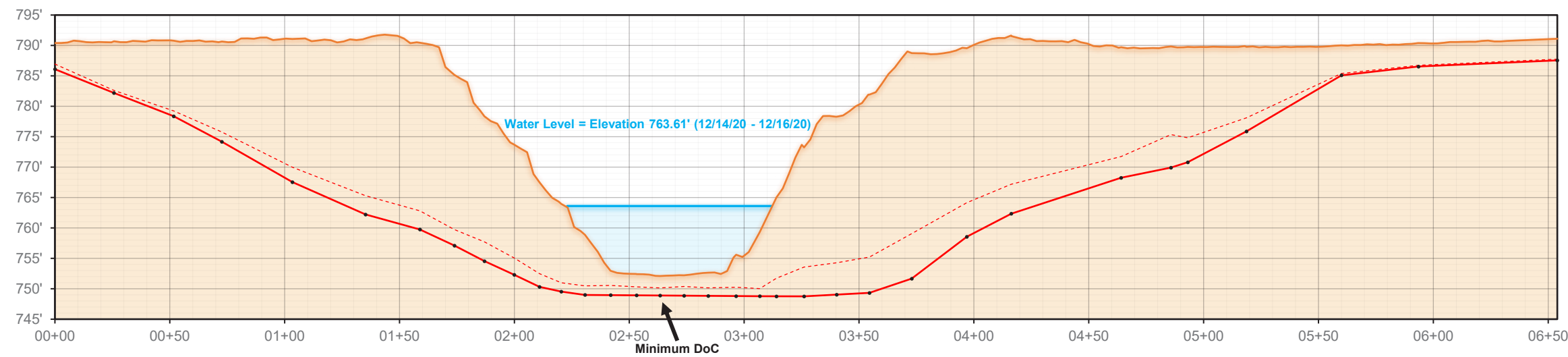
**PLAN VIEW**



**DoC DATA**

Pt. ID	STA#	Easting (ft)	Northing (ft)	Topo Elev. (ft)	T.O.P. Elev. (ft)	DoC (ft)	MS DoC* (ft)
1	00+00			790.40	786.10	4.30	3.46
2	00+26			790.69	782.19	8.50	8.08
3	00+52			790.78	778.37	12.41	11.54
4	00+73			790.65	774.18	16.47	14.88
5	01+03			791.06	767.54	23.52	21.08
6	01+35			791.15	762.22	28.93	25.85
7	01+59			790.44	759.75	30.69	27.63
8	01+74			785.16	757.11	28.05	25.43
9	01+87			778.34	754.55	23.79	20.63
10	02+00			773.68	752.29	21.39	18.63
11	02+11			767.50	750.32	17.18	15.01
12	02+20			763.94	749.53	14.41	12.96
13	02+31			758.87	748.99	9.88	8.39
14	02+42			752.95	748.95	3.99	2.40
15	02+53			752.40	748.92	3.48	2.09
16	02+63			752.09	748.89	3.20	1.96
17	02+74			752.21	748.87	3.35	1.84
18	02+84			752.64	748.84	3.81	2.50
19	02+97			755.60	748.80	6.79	5.34
20	03+07			759.31	748.77	10.53	9.28
21	03+14			765.02	748.77	16.26	13.29
22	03+26			773.24	748.75	24.49	19.67
23	03+40			778.29	749.04	29.24	24.01
24	03+55			781.92	749.33	32.59	26.71
25	03+73			788.74	751.67	37.07	29.67
26	03+97			789.54	758.56	30.99	25.39
27	04+16			791.54	762.34	29.20	24.35
28	04+64			789.71	768.25	21.46	17.97
29	04+86			789.83	769.92	19.91	14.48
30	04+93			789.76	770.81	18.95	14.94
31	05+19			789.77	775.88	13.89	11.67
32	05+60			790.01	785.09	4.93	4.62
33	05+93			790.38	786.54	3.85	3.64
34	06+54			791.10	787.55	3.55	3.36

**PROFILE VIEW**



Land Data  
Underwater Data  
*Italics = Projected topo or bathymetric points and DoC / MSDoC*

LEGEND	DEFINITIONS	GEODETIC SETTINGS	PLOT NOTES	CONTROL POINT VERIFICATION
<ul style="list-style-type: none"> <li>Water Level</li> <li>Topo / Bathymetry</li> <li>Projected Topo / Bathymetry</li> <li>+VSDV</li> <li>T.O.P. Point</li> <li>No Data (obstruction, loss of signal)</li> <li>Overlaid Data (if applicable)</li> </ul>	<p><b>DoC</b> - Depth of Cover</p> <p><b>T.O.P.</b> - Top of Pipe (or Cable, Conduit, etc.)</p> <p><b>+VSDV</b> - Positive aspect of vertical confidence level. Represents a 95% likelihood that the true position of the target lies deeper than this point.</p> <p><b>MSDoC*</b> - Minimum Statistical Depth of Cover. This reflects the measured distance from the +VSDV component to the Topo / Bathymetry line.</p>		<p>A Lidar system was used to determine topographic elevations in the area surrounding this crossing site, and a multi-beam sonar was used to determine bathymetric elevations in the waterway.</p>	<p>CONTROL POINTS WERE ESTABLISHED AND/OR REFERENCED BY DoC MAPPING TO ADJUST FOR HORIZONTAL AND VERTICAL VARIANCE DURING THE TIME OF THIS SURVEY. INFORMATION FOR THE CONTROL POINTS BELOW:</p> <p>PLEASE REFER TO THE "CONTROL POINT VERIFICATION SHEET" FOR MORE DETAILS ON THE CONTROL POINT(S) AND DoC MAPPING'S OBSERVATIONS.</p>



**DEPTH OF COVER STUDY**  
DATE(S): 12/14/20 - 12/16/20

---

**PLAN / PROFILE**

PREPARED FOR: