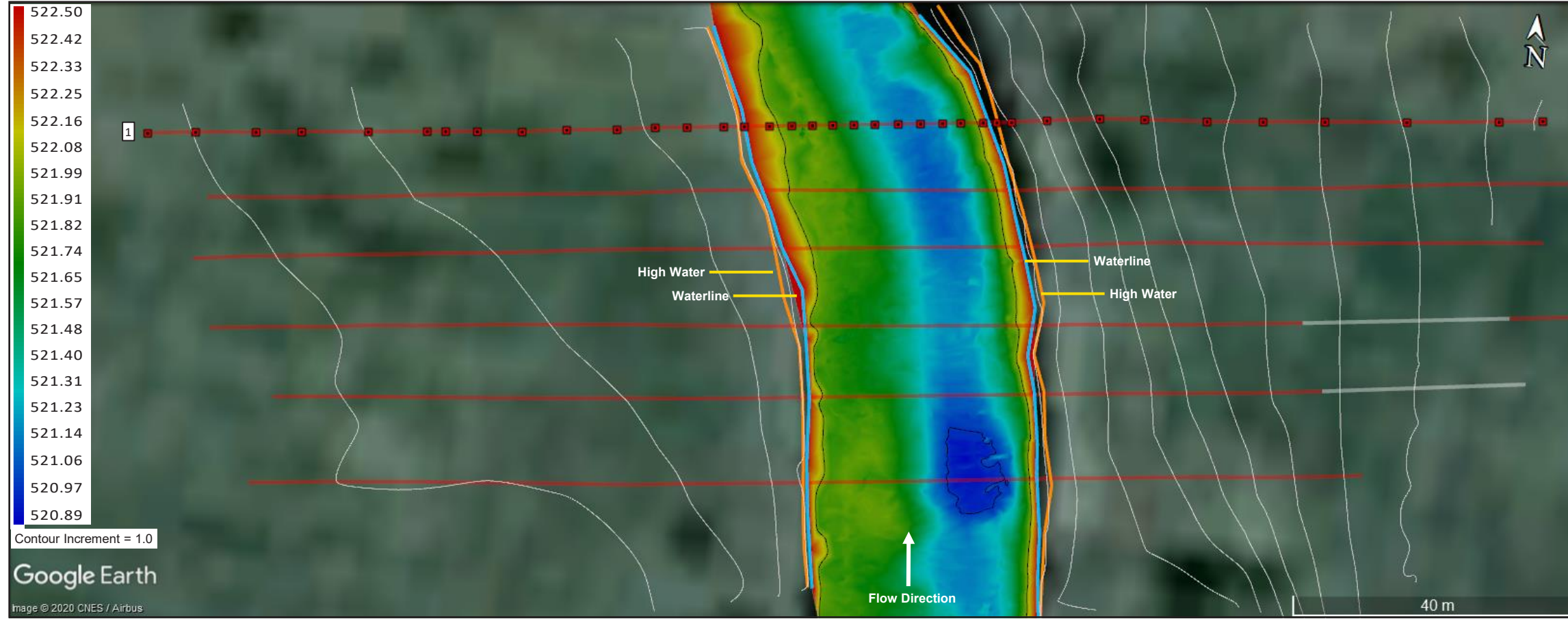


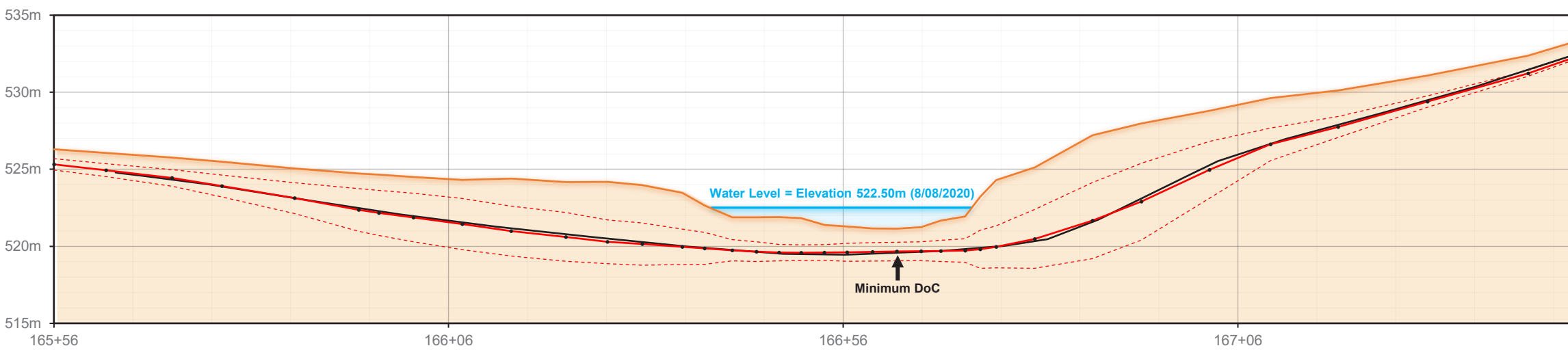
PLAN VIEW



DoC DATA


Pt. ID	STA#	Latitude	Longitude	Topo Elev. (m)	T.O.P. Elev. (m)	DoC (m)	MS DoC* (m)
1	165+56			526.30	525.32	0.98	0.61
2	165+63			526.06	524.94	1.12	0.70
3	165+71			525.76	524.44	1.32	0.78
4	165+77			525.50	523.91	1.58	0.87
5	165+86			525.06	523.13	1.93	0.93
6	165+95			524.72	522.36	2.36	0.97
7	165+97			524.65	522.16	2.49	1.02
8	166+02			524.50	521.87	2.63	1.05
9	166+08			524.31	521.44	2.87	1.21
10	166+14			524.40	520.98	3.41	1.79
11	166+21			524.16	520.61	3.55	1.97
12	166+26			524.19	520.29	3.89	2.47
13	166+31			523.97	520.15	3.83	2.45
14	166+36			523.47	519.96	3.50	2.36
15	166+38			522.65	519.86	2.79	1.75
16	166+42			521.88	519.74	2.14	1.45
17	166+45			521.88	519.66	2.22	1.58
18	166+48			521.89	519.59	2.30	1.77
19	166+51			521.82	519.58	2.24	1.73
20	166+54			521.38	519.60	1.78	1.27
21	166+56			521.29	519.62	1.67	1.09
22	166+60			521.16	519.64	1.52	0.93
23	166+63			521.15	519.66	1.49	0.89
24	166+66			521.24	519.68	1.56	0.94
25	166+68			521.67	519.70	1.97	1.28
26	166+71			521.94	519.72	2.22	1.45
27	166+73			523.21	519.81	3.40	2.17
28	166+75			524.30	519.96	4.33	2.98
29	166+80			525.12	520.48	4.64	2.73
30	166+88			527.21	521.67	5.54	3.07
31	166+94			527.98	522.90	5.08	2.59
32	167+02			528.81	524.97	3.84	2.00
33	167+10			529.62	526.62	3.00	1.94
34	167+19			530.12	527.75	2.37	1.69
35	167+30			531.08	529.40	1.68	1.32
36	167+43			532.37	531.23	1.15	0.96
37	167+49			533.29	532.29	1.00	0.84

PROFILE VIEW



Land Data
Underwater Data
Italics = Projected topo or bathymetric points and DoC / MSDoC

LEGEND	DEFINITIONS	GEODETIC SETTINGS	PLOT NOTES	CONTROL POINT VERIFICATION
<ul style="list-style-type: none"> Water Level Topo / Bathymetry Projected Topo / Bathymetry +VSDV T.O.P. Point No Data (obstruction, loss of signal) Overlaid Data (if applicable) 	<p>DoC - Depth of Cover</p> <p>T.O.P. - Top of Pipe (or Cable, Conduit, etc.)</p> <p>+VSDV - Positive aspect of vertical confidence level. Represents a 95% likelihood that the true position of the target lies deeper than this point.</p> <p>MSDoC* - Minimum Statistical Depth of Cover. This reflects the measured distance from the +VSDV component to the Topo / Bathymetry line.</p>		<p>Overlaid data has been adjusted -0.5 m in elevation to illustrate a more precise comparison to DoC Mapping's depth of cover data.</p>	<p>CONTROL POINTS WERE ESTABLISHED AND/OR REFERENCED BY DoC MAPPING TO ADJUST FOR HORIZONTAL AND VERTICAL VARIANCE DURING THE TIME OF THIS SURVEY. INFORMATION FOR THE CONTROL POINTS BELOW:</p> <p>PLEASE REFER TO THE "CONTROL POINT VERIFICATION SHEET" FOR MORE DETAILS ON THE CONTROL POINT(S) AND DoC MAPPING'S OBSERVATIONS.</p>

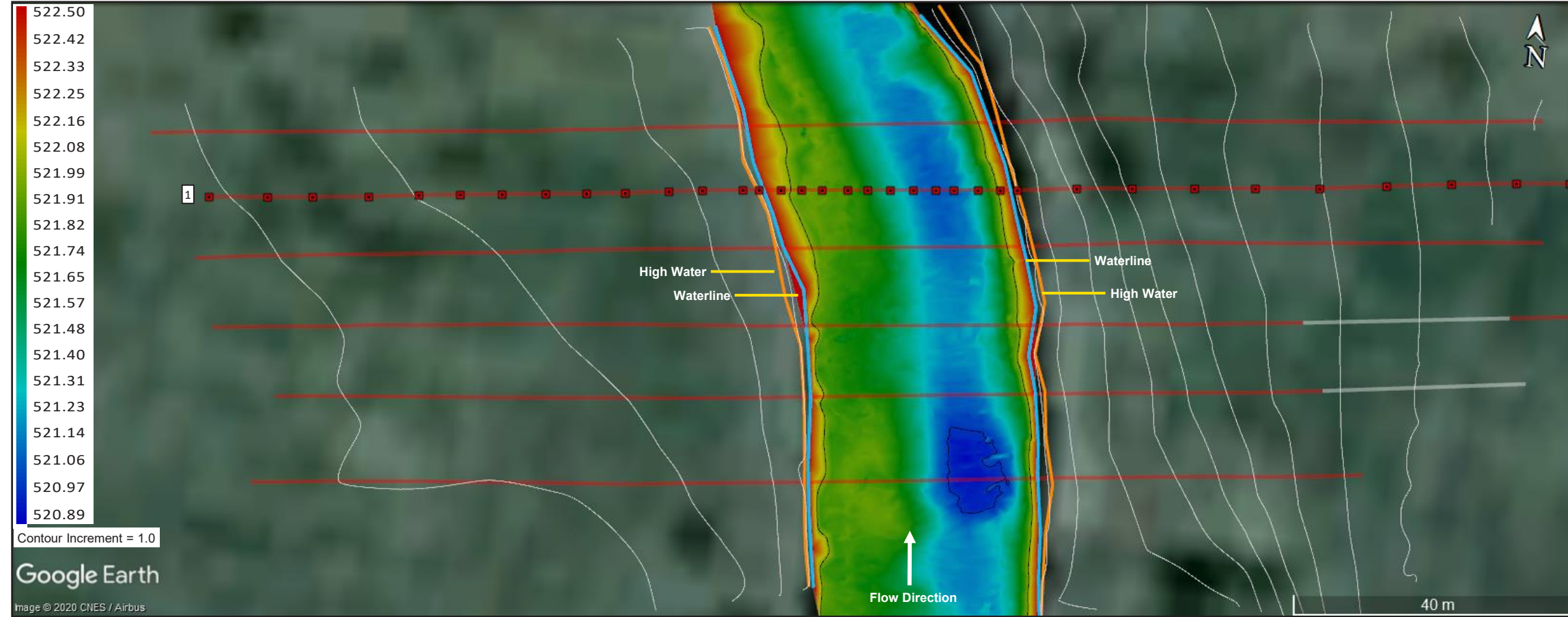


DEPTH OF COVER STUDY
DATE(S): 8/08/2020

IMU Data Overlay

PREPARED FOR:

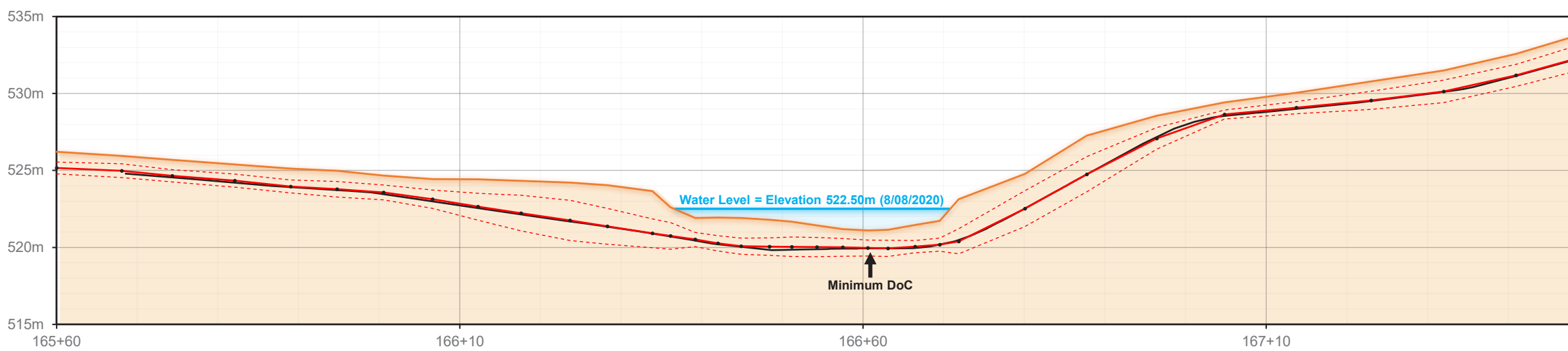
PLAN VIEW



DoC DATA


Pt. ID	STA#	Latitude	Longitude	Topo Elev. (m)	T.O.P. Elev. (m)	DoC (m)	MS DoC* (m)
1	165+60			526.21	525.16	1.05	0.66
2	165+68			525.94	524.98	0.96	0.51
3	165+74			525.69	524.65	1.04	0.64
4	165+82			525.38	524.34	1.04	0.62
5	165+89			525.13	523.96	1.16	0.74
6	165+95			524.98	523.78	1.20	0.69
7	166+01			524.67	523.57	1.10	0.62
8	166+07			524.43	523.14	1.30	0.70
9	166+12			524.43	522.64	1.78	0.90
10	166+18			524.33	522.23	2.10	0.95
11	166+24			524.21	521.76	2.45	1.15
12	166+28			524.04	521.38	2.66	1.50
13	166+34			523.65	520.92	2.74	1.80
14	166+36			522.61	520.75	1.87	1.00
15	166+39			521.91	520.51	1.40	0.94
16	166+42			521.94	520.26	1.68	1.18
17	166+45			521.91	520.08	1.83	1.31
18	166+48			521.79	520.05	1.74	1.17
19	166+51			521.67	520.04	1.63	1.00
20	166+54			521.43	520.02	1.41	0.79
21	166+58			521.19	520.00	1.19	0.61
22	166+61			521.10	519.96	1.14	0.62
23	166+63			521.14	519.93	1.21	0.68
24	166+67			521.46	520.05	1.41	1.02
25	166+70			521.73	520.18	1.55	1.12
26	166+72			523.13	520.40	2.73	1.91
27	166+80			524.78	522.52	2.26	1.10
28	166+88			527.26	524.76	2.50	1.36
29	166+96			528.56	527.09	1.47	0.78
30	167+05			529.42	528.64	0.78	0.50
31	167+14			530.04	529.08	0.96	0.57
32	167+23			530.79	529.55	1.23	0.64
33	167+32			531.50	530.14	1.36	0.63
34	167+41			532.58	531.18	1.40	0.68
35	167+48			533.74	532.27	1.47	0.66

PROFILE VIEW



Land Data
Underwater Data
Italics = Projected topo or bathymetric points and DoC / MSDoC

LEGEND	DEFINITIONS	GEODETIC SETTINGS	PLOT NOTES	CONTROL POINT VERIFICATION
<ul style="list-style-type: none"> Water Level Topo / Bathymetry Projected Topo / Bathymetry +VSDV T.O.P. Point No Data (obstruction, loss of signal) Overlaid Data (if applicable) 	<p>DoC - Depth of Cover</p> <p>T.O.P. - Top of Pipe (or Cable, Conduit, etc.)</p> <p>+VSDV - Positive aspect of vertical confidence level. Represents a 95% likelihood that the true position of the target lies deeper than this point.</p> <p>MSDoC* - Minimum Statistical Depth of Cover. This reflects the measured distance from the +VSDV component to the Topo / Bathymetry line.</p>		<p>Overlaid data has been adjusted 0.4 m in elevation, and -3 m in distance to illustrate a more precise comparison to DoC Mapping's depth of cover data.</p>	<p>CONTROL POINT VERIFICATION</p> <p>CONTROL POINTS WERE ESTABLISHED AND/OR REFERENCED BY DoC MAPPING TO ADJUST FOR HORIZONTAL AND VERTICAL VARIANCE DURING THE TIME OF THIS SURVEY. INFORMATION FOR THE CONTROL POINTS BELOW:</p> <p>PLEASE REFER TO THE "CONTROL POINT VERIFICATION SHEET" FOR MORE DETAILS ON THE CONTROL POINT(S) AND DoC MAPPING'S OBSERVATIONS.</p>

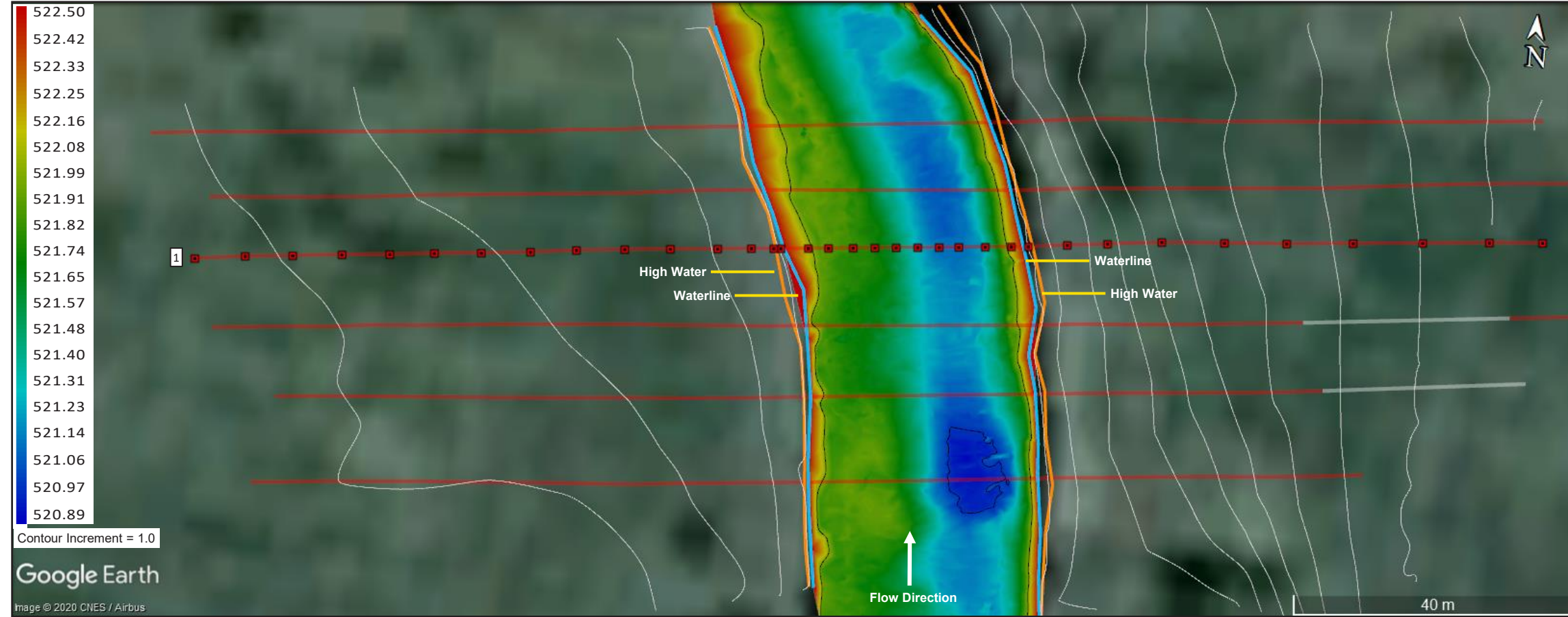


DEPTH OF COVER STUDY
DATE(S): 8/08/2020

IMU Data Overlay

PREPARED FOR:

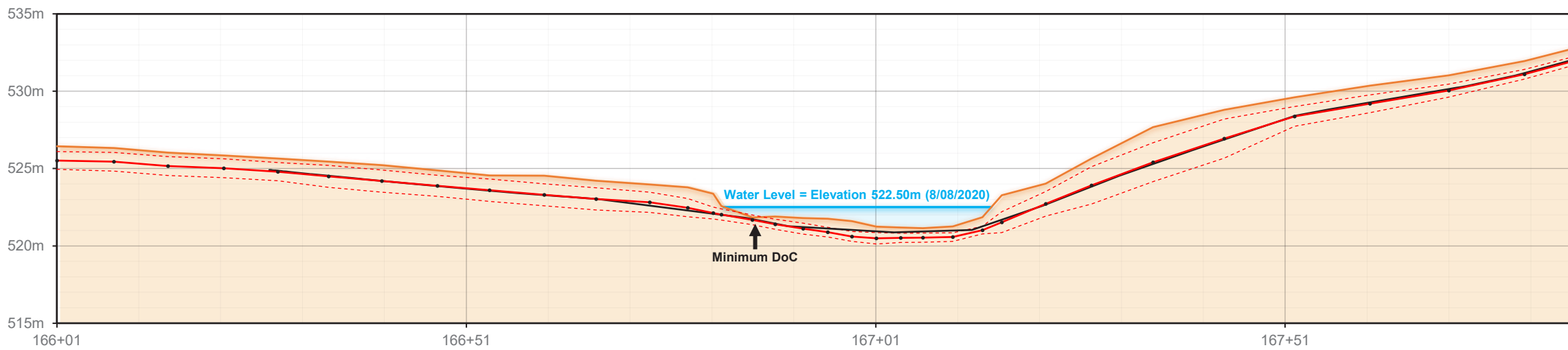
PLAN VIEW



DoC DATA


Pt. ID	STA#	Latitude	Longitude	Topo Elev. (m)	T.O.P. Elev. (m)	DoC (m)	MS DoC* (m)
1	166+01			526.44	525.52	0.92	0.35
2	166+08			526.33	525.45	0.88	0.28
3	166+14			526.03	525.16	0.87	0.25
4	166+21			525.84	525.02	0.82	0.21
5	166+28			525.65	524.80	0.85	0.26
6	166+34			525.44	524.49	0.95	0.24
7	166+41			525.22	524.20	1.02	0.31
8	166+47			524.88	523.89	0.99	0.31
9	166+54			524.55	523.60	0.94	0.22
10	166+60			524.54	523.30	1.24	0.52
11	166+67			524.22	523.04	1.18	0.46
12	166+73			523.97	522.82	1.16	0.50
13	166+78			523.79	522.47	1.32	0.73
14	166+81			523.38	522.12	1.26	0.88
15	166+82			522.58	522.03	0.55	0.19
16	166+86			521.84	521.69	0.15	-0.16
17	166+89			521.90	521.40	0.50	0.17
18	166+92			521.80	521.12	0.68	0.32
19	166+95			521.76	520.89	0.87	0.56
20	166+98			521.60	520.61	0.99	0.67
21	167+01			521.24	520.49	0.75	0.38
22	167+04			521.18	520.51	0.67	0.37
23	167+07			521.15	520.53	0.62	0.32
24	167+10			521.26	520.57	0.69	0.41
25	167+14			521.86	521.02	0.84	0.59
26	167+16			523.27	521.53	1.74	1.06
27	167+22			524.03	522.72	1.31	0.52
28	167+27			525.65	523.91	1.74	0.53
29	167+35			527.67	525.41	2.26	1.01
30	167+43			528.79	526.94	1.86	0.59
31	167+52			529.60	528.37	1.23	0.60
32	167+61			530.37	529.19	1.17	0.60
33	167+71			531.03	530.04	0.99	0.58
34	167+80			531.95	531.10	0.85	0.54
35	167+87			532.94	532.15	0.79	0.52

PROFILE VIEW



Land Data
Underwater Data
Italics = Projected topo or bathymetric points and DoC / MSDoC

LEGEND	DEFINITIONS	GEODETIC SETTINGS	PLOT NOTES	CONTROL POINT VERIFICATION
<ul style="list-style-type: none"> Water Level Topo / Bathymetry Projected Topo / Bathymetry +VSDV T.O.P. Point No Data (obstruction, loss of signal) Overlaid Data (if applicable) 	<p>DoC - Depth of Cover</p> <p>T.O.P. - Top of Pipe (or Cable, Conduit, etc.)</p> <p>+VSDV - Positive aspect of vertical confidence level. Represents a 95% likelihood that the true position of the target lies deeper than this point.</p> <p>MSDoC* - Minimum Statistical Depth of Cover. This reflects the measured distance from the +VSDV component to the Topo / Bathymetry line.</p>		<p>Overlaid data has been adjusted 3.3 m in elevation, and 2 m in distance to illustrate a more precise comparison to DoC Mapping's depth of cover data.</p>	<p>CONTROL POINT VERIFICATION</p> <p>CONTROL POINTS WERE ESTABLISHED AND/OR REFERENCED BY DoC MAPPING TO ADJUST FOR HORIZONTAL AND VERTICAL VARIANCE DURING THE TIME OF THIS SURVEY. INFORMATION FOR THE CONTROL POINTS BELOW:</p> <p>PLEASE REFER TO THE "CONTROL POINT VERIFICATION SHEET" FOR MORE DETAILS ON THE CONTROL POINT(S) AND DoC MAPPING'S OBSERVATIONS.</p>

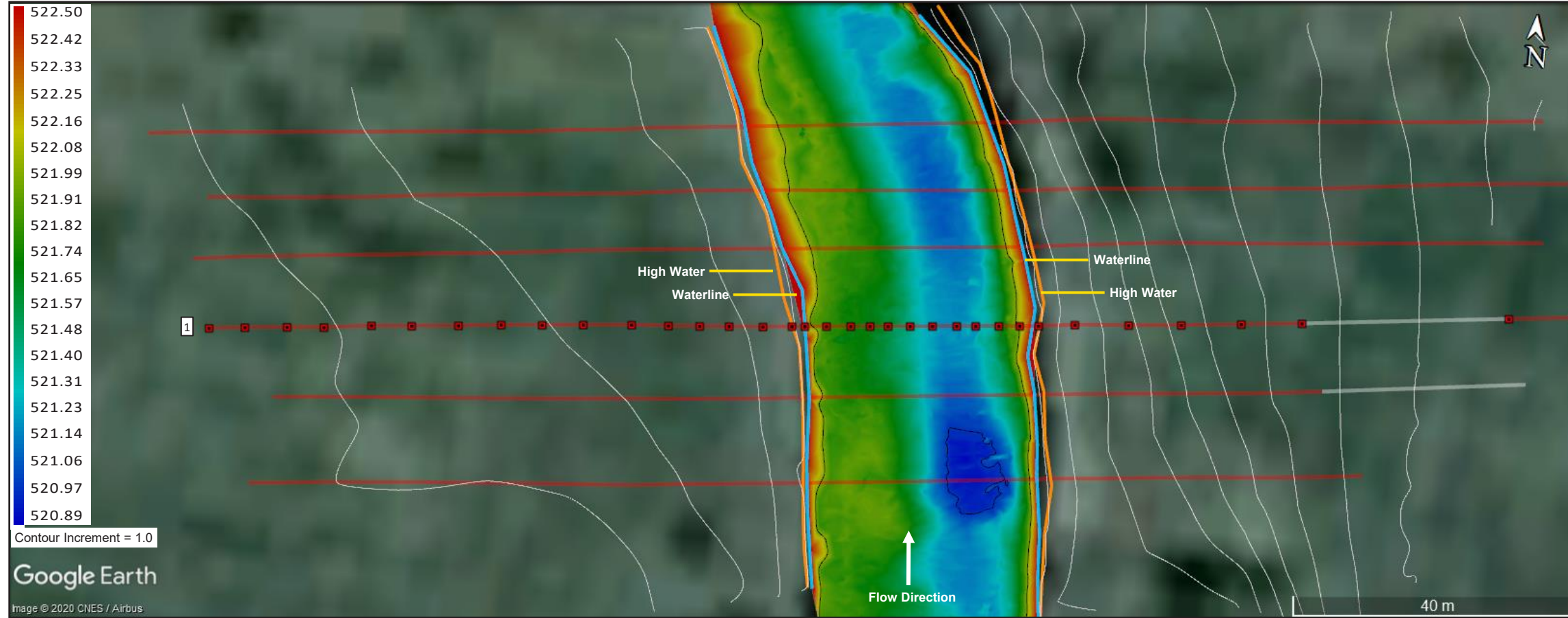


DEPTH OF COVER STUDY
DATE(S): 8/08/2020

IMU Data Overlay

PREPARED FOR:

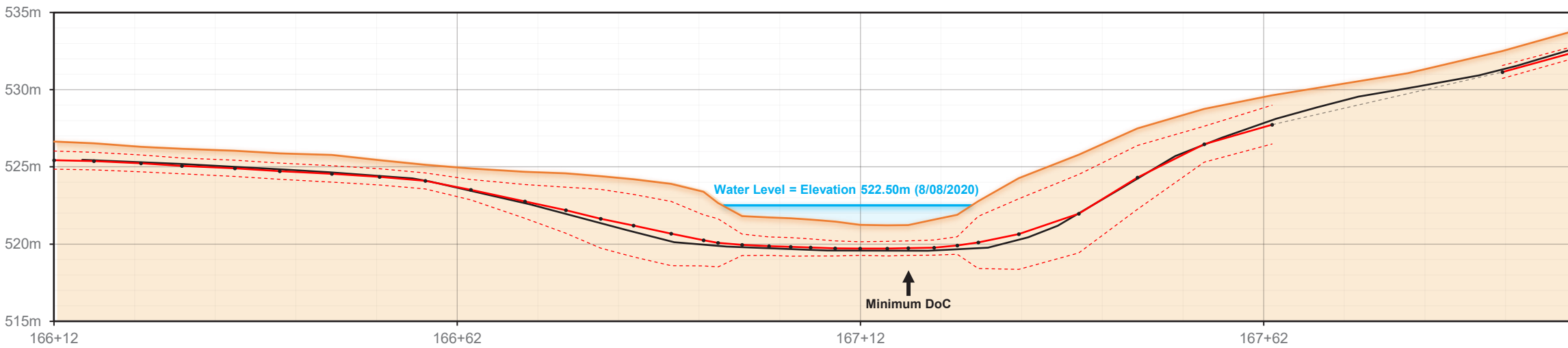
PLAN VIEW



DoC DATA


Pt. ID	STA#	Latitude	Longitude	Topo Elev. (m)	T.O.P. Elev. (m)	DoC (m)	MS DoC* (m)
1	166+12			526.64	525.44	1.20	0.61
2	166+17			526.53	525.37	1.15	0.58
3	166+23			526.29	525.23	1.06	0.52
4	166+28			526.17	525.07	1.10	0.60
5	166+34			526.04	524.91	1.14	0.62
6	166+40			525.88	524.73	1.15	0.62
7	166+46			525.77	524.55	1.22	0.69
8	166+52			525.44	524.35	1.08	0.55
9	166+58			525.14	524.10	1.04	0.52
10	166+63			524.90	523.52	1.38	0.71
11	166+70			524.67	522.77	1.91	0.81
12	166+75			524.58	522.19	2.39	0.90
13	166+80			524.39	521.64	2.75	0.84
14	166+84			524.20	521.20	3.01	0.98
15	166+88			523.90	520.68	3.22	1.14
16	166+92			523.38	520.24	3.14	1.48
17	166+94			522.66	520.08	2.58	1.02
18	166+97			521.81	519.95	1.86	1.16
19	167+00			521.72	519.86	1.86	1.26
20	167+03			521.67	519.82	1.85	1.24
21	167+06			521.58	519.78	1.80	1.25
22	167+09			521.45	519.72	1.73	1.25
23	167+12			521.25	519.71	1.54	1.10
24	167+15			521.21	519.71	1.50	1.03
25	167+18			521.23	519.74	1.49	1.02
26	167+21			521.58	519.77	1.81	1.32
27	167+24			521.90	519.90	2.00	1.43
28	167+26			522.78	520.11	2.67	0.98
29	167+31			524.27	520.64	3.63	1.34
30	167+39			525.78	521.97	3.82	1.27
31	167+46			527.49	524.32	3.18	1.11
32	167+54			528.76	526.47	2.29	1.13
33	167+63			529.64	527.74	1.90	0.64
34	167+91			532.51	531.15	1.36	0.94
35	168+00			533.84	532.45	1.38	0.99

PROFILE VIEW



Land Data
Underwater Data
Italics = Projected topo or bathymetric points and DoC / MSDoC

LEGEND	DEFINITIONS	GEODETIC SETTINGS	PLOT NOTES	CONTROL POINT VERIFICATION
<ul style="list-style-type: none"> Water Level Topo / Bathymetry Projected Topo / Bathymetry +VSDV T.O.P. Point No Data (obstruction, loss of signal) Overlaid Data (if applicable) 	<p>DoC - Depth of Cover</p> <p>T.O.P. - Top of Pipe (or Cable, Conduit, etc.)</p> <p>+VSDV - Positive aspect of vertical confidence level. Represents a 95% likelihood that the true position of the target lies deeper than this point.</p> <p>MSDoC* - Minimum Statistical Depth of Cover. This reflects the measured distance from the +VSDV component to the Topo / Bathymetry line.</p>		<p>Overlaid data has been adjusted 1 m in elevation to illustrate a more precise comparison to DoC Mapping's depth of cover data.</p>	<p>CONTROL POINTS WERE ESTABLISHED AND/OR REFERENCED BY DoC MAPPING TO ADJUST FOR HORIZONTAL AND VERTICAL VARIANCE DURING THE TIME OF THIS SURVEY. INFORMATION FOR THE CONTROL POINTS BELOW:</p> <p>PLEASE REFER TO THE "CONTROL POINT VERIFICATION SHEET" FOR MORE DETAILS ON THE CONTROL POINT(S) AND DoC MAPPING'S OBSERVATIONS.</p>

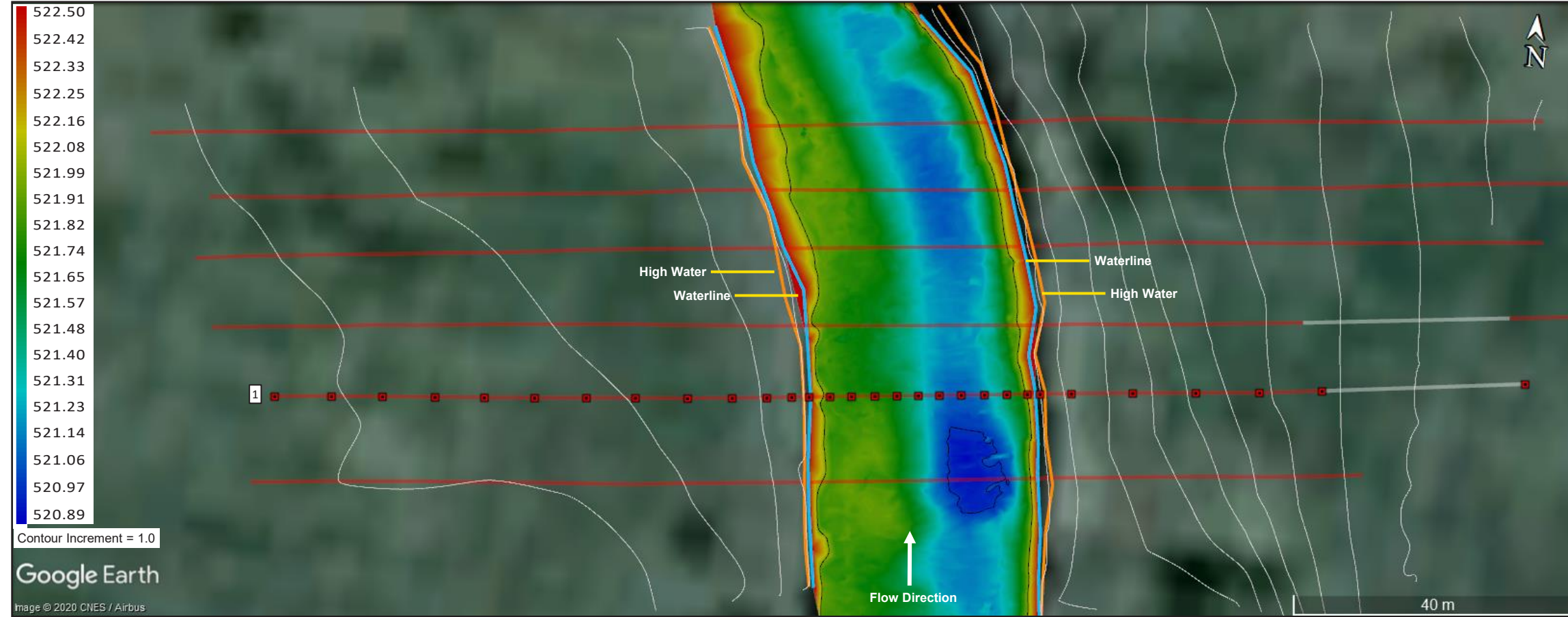


DEPTH OF COVER STUDY
DATE(S): 8/08/2020

IMU Data Overlay

PREPARED FOR:

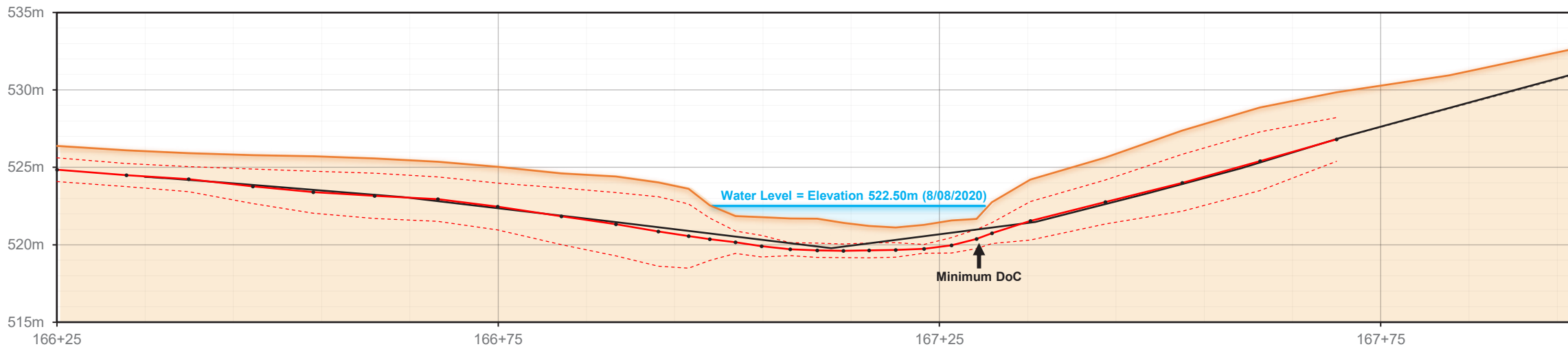
PLAN VIEW



DoC DATA


Pt. ID	STA#	Latitude	Longitude	Topo Elev. (m)	T.O.P. Elev. (m)	DoC (m)	MS DoC* (m)
1	166+25			526.39	524.85	1.54	0.77
2	166+33			526.11	524.50	1.61	0.85
3	166+40			525.92	524.24	1.67	0.86
4	166+47			525.79	523.78	2.02	0.90
5	166+54			525.72	523.40	2.32	0.97
6	166+61			525.58	523.16	2.42	0.96
7	166+68			525.36	522.95	2.41	0.98
8	166+75			525.04	522.47	2.57	1.05
9	166+82			524.61	521.84	2.78	0.95
10	166+88			524.41	521.33	3.09	1.05
11	166+93			524.03	520.86	3.17	0.93
12	166+97			523.61	520.56	3.05	0.98
13	166+99			522.56	520.36	2.20	0.82
14	167+02			521.86	520.17	1.70	0.97
15	167+05			521.78	519.91	1.87	1.17
16	167+08			521.70	519.71	1.99	1.57
17	167+11			521.69	519.65	2.05	1.58
18	167+14			521.41	519.61	1.80	1.36
19	167+17			521.21	519.64	1.57	1.09
20	167+20			521.11	519.66	1.45	0.98
21	167+23			521.28	519.73	1.55	1.26
22	167+26			521.57	519.97	1.60	1.10
23	167+29			521.67	520.37	1.30	0.68
24	167+31			522.75	520.75	2.00	1.32
25	167+35			524.21	521.54	2.66	1.42
26	167+44			525.63	522.76	2.87	1.45
27	167+53			527.37	524.00	3.37	1.53
28	167+61			528.86	525.40	3.46	1.57
29	167+70			529.85	526.80	3.05	1.63
30	167+98			532.80	531.15	1.66	1.23

PROFILE VIEW



Land Data
Underwater Data
Italics = Projected topo or bathymetric points and DoC / MSDoC

LEGEND	DEFINITIONS	GEODETIC SETTINGS	PLOT NOTES	CONTROL POINT VERIFICATION
<ul style="list-style-type: none"> Water Level Topo / Bathymetry Projected Topo / Bathymetry +VSDV T.O.P. Point No Data (obstruction, loss of signal) Overlaid Data (if applicable) 	<p>DoC - Depth of Cover</p> <p>T.O.P. - Top of Pipe (or Cable, Conduit, etc.)</p> <p>+VSDV - Positive aspect of vertical confidence level. Represents a 95% likelihood that the true position of the target lies deeper than this point.</p> <p>MSDoC* - Minimum Statistical Depth of Cover. This reflects the measured distance from the +VSDV component to the Topo / Bathymetry line.</p>		<p>Overlaid data has been adjusted -7.1 m in elevation, and 2 m in distance to illustrate a more precise comparison to DoC Mapping's depth of cover data.</p>	<p>CONTROL POINTS WERE ESTABLISHED AND/OR REFERENCED BY DoC MAPPING TO ADJUST FOR HORIZONTAL AND VERTICAL VARIANCE DURING THE TIME OF THIS SURVEY. INFORMATION FOR THE CONTROL POINTS BELOW:</p> <p>PLEASE REFER TO THE "CONTROL POINT VERIFICATION SHEET" FOR MORE DETAILS ON THE CONTROL POINT(S) AND DoC MAPPING'S OBSERVATIONS.</p>

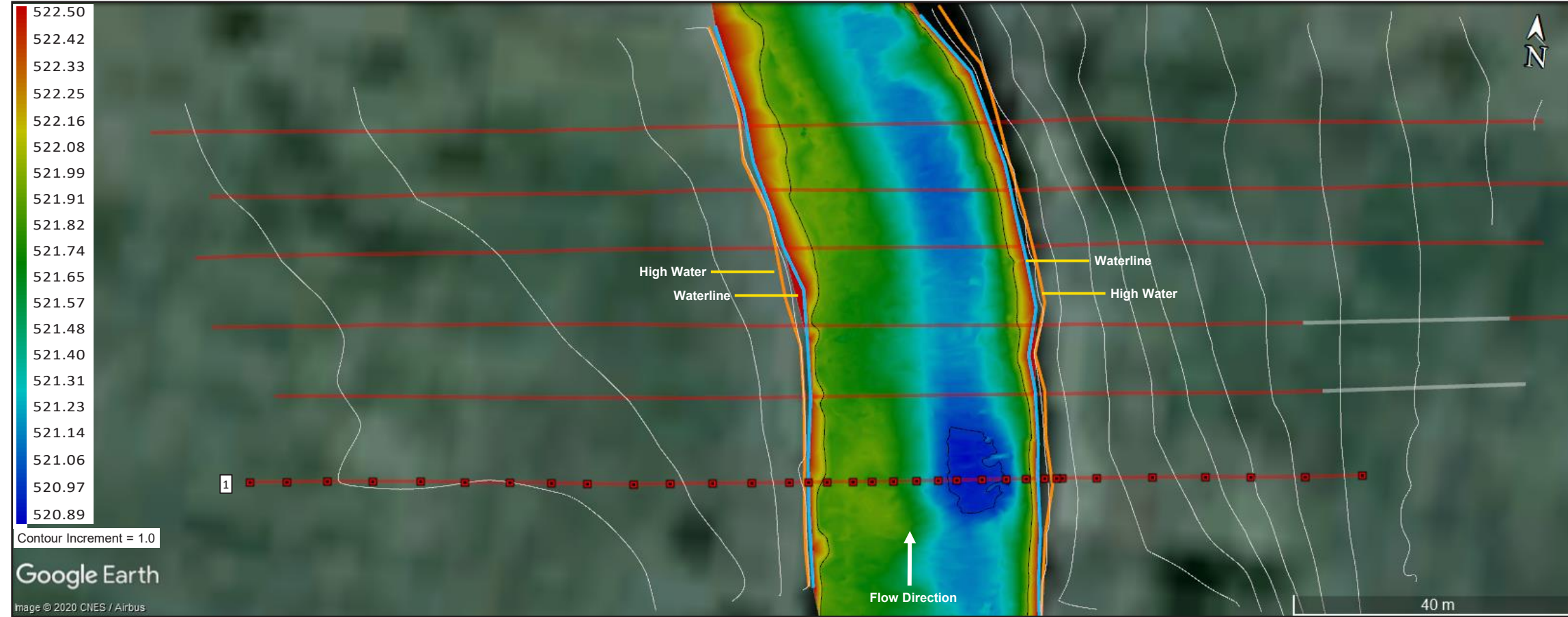


DEPTH OF COVER STUDY
DATE(S): 8/08/2020

IMU Data Overlay

PREPARED FOR:

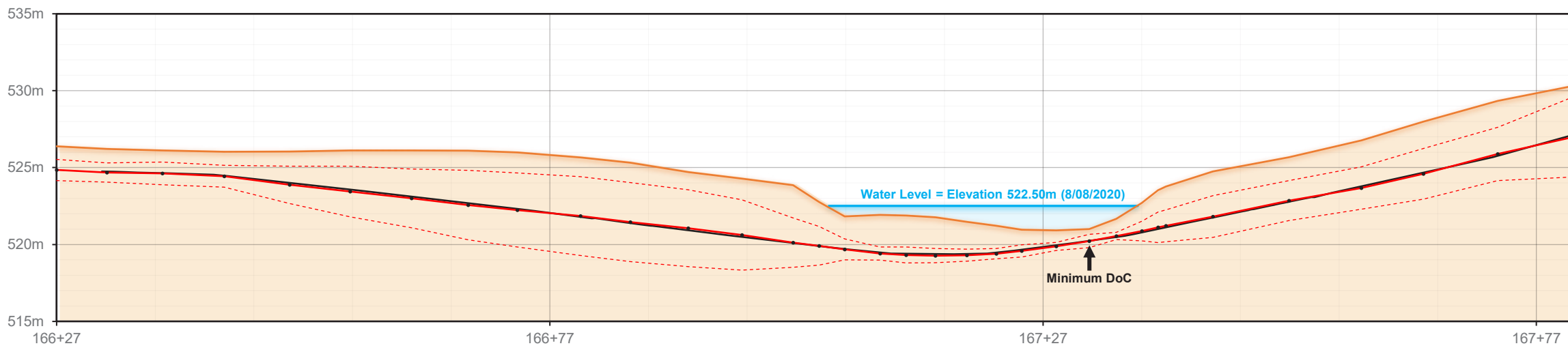
PLAN VIEW



DoC DATA


Pt. ID	STA#	Latitude	Longitude	Topo Elev. (m)	T.O.P. Elev. (m)	DoC (m)	MS DoC* (m)
1	166+27			526.38	524.85	1.54	0.85
2	166+32			526.22	524.68	1.54	0.91
3	166+38			526.12	524.62	1.50	0.76
4	166+44			526.03	524.44	1.58	0.87
5	166+51			526.04	523.88	2.16	0.95
6	166+57			526.11	523.45	2.66	1.02
7	166+63			526.11	523.00	3.11	1.20
8	166+69			526.10	522.57	3.53	1.28
9	166+74			525.98	522.24	3.74	1.33
10	166+80			525.67	521.85	3.81	1.25
11	166+85			525.32	521.45	3.87	1.29
12	166+91			524.70	521.06	3.64	1.15
13	166+96			524.28	520.62	3.67	1.38
14	167+02			523.86	520.12	3.73	2.13
15	167+04			522.77	519.91	2.85	1.59
16	167+07			521.83	519.68	2.15	1.47
17	167+10			521.92	519.41	2.51	2.09
18	167+13			521.88	519.32	2.56	2.04
19	167+16			521.77	519.28	2.50	2.04
20	167+19			521.47	519.30	2.17	1.77
21	167+22			521.21	519.40	1.81	1.47
22	167+25			520.96	519.58	1.38	0.98
23	167+28			520.92	519.87	1.05	0.78
24	167+32			521.00	520.23	0.77	0.35
25	167+34			521.67	520.55	1.12	0.88
26	167+37			522.71	520.87	1.84	1.20
27	167+39			523.53	521.12	2.41	1.42
28	167+39			523.77	521.22	2.55	1.52
29	167+44			524.75	521.82	2.93	1.57
30	167+52			525.68	522.85	2.83	1.52
31	167+59			526.77	523.67	3.10	1.72
32	167+66			527.98	524.60	3.39	1.75
33	167+73			529.34	525.89	3.46	1.72
34	167+81			530.34	527.03	3.31	0.68

PROFILE VIEW



Land Data
Underwater Data
Italics = Projected topo or bathymetric points and DoC / MSDoC

LEGEND	DEFINITIONS	GEODETIC SETTINGS	PLOT NOTES	CONTROL POINT VERIFICATION
<ul style="list-style-type: none"> Water Level Topo / Bathymetry Projected Topo / Bathymetry +VSDV T.O.P. Point No Data (obstruction, loss of signal) Overlaid Data (if applicable) 	<p>DoC - Depth of Cover</p> <p>T.O.P. - Top of Pipe (or Cable, Conduit, etc.)</p> <p>+VSDV - Positive aspect of vertical confidence level. Represents a 95% likelihood that the true position of the target lies deeper than this point.</p> <p>MSDoC* - Minimum Statistical Depth of Cover. This reflects the measured distance from the +VSDV component to the Topo / Bathymetry line.</p>		<p>Overlaid data has been adjusted -1.5 m in elevation, and 2 m in distance to illustrate a more precise comparison to DoC Mapping's depth of cover data.</p>	<p>CONTROL POINTS WERE ESTABLISHED AND/OR REFERENCED BY DoC MAPPING TO ADJUST FOR HORIZONTAL AND VERTICAL VARIANCE DURING THE TIME OF THIS SURVEY. INFORMATION FOR THE CONTROL POINTS BELOW:</p> <p>PLEASE REFER TO THE "CONTROL POINT VERIFICATION SHEET" FOR MORE DETAILS ON THE CONTROL POINT(S) AND DoC MAPPING'S OBSERVATIONS.</p>



DEPTH OF COVER STUDY
DATE(S): 8/08/2020

IMU Data Overlay

PREPARED FOR: